



PLEASE VISIT US

You are cordially invited  
to visit Orchidhouse and discuss  
this exciting new opportunity  
in urban living.

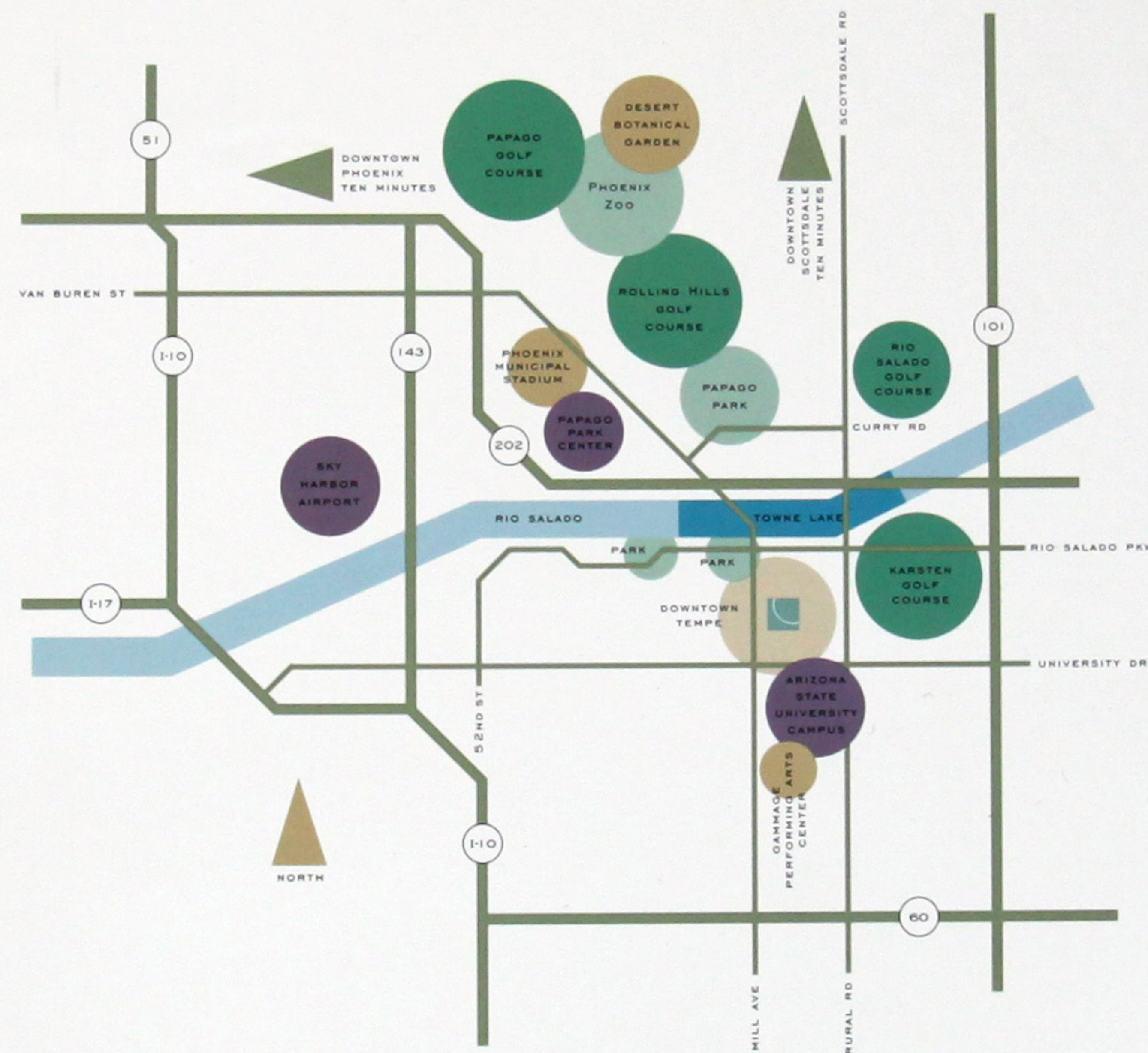
Call for an appointment at  
480-966-9600 or visit our web  
site at [www.mcwholdings.com](http://www.mcwholdings.com)



ORCHIDHOUSE



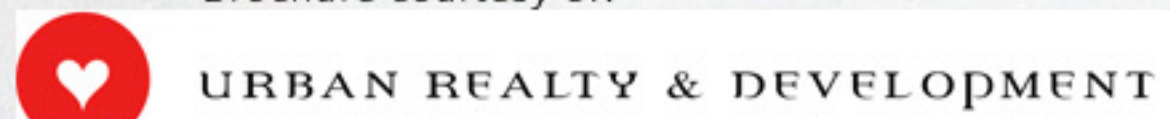
THE ORCHID



orchidhouse

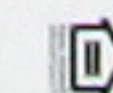
AN URBAN LIFESTYLE  
LIVE & WORK LOFT COMMUNITY  
IN DOWNTOWN TEMPE  
EAST SIXTH STREET OFF MILL  
TEMPE, ARIZONA 85281  
480-966-9600  
[WWW.MCWHOLDINGS.COM](http://WWW.MCWHOLDINGS.COM)  
A DEVELOPMENT OF MCW HOLDINGS, LLC.

Brochure courtesy of:



URBAN REALTY & DEVELOPMENT

© 2008 MCW HOLDINGS, LLC. PHOTOGRAPHS ARE SIMPLY REPRESENTATIVE OF THE LOFT LIFESTYLE AND DO NOT REFLECT ACTUAL FINAL PHOTOS OR APPEARANCES. WE THANK THE ARCHITECTS AND DESIGNERS FOR THEIR CREATIVE CONTRIBUTIONS TO THE BEST OF OUR KNOWLEDGE AND BELIEVE THAT THE MINUTE KITCHEN NOTICE IS OFFER TO SELL OR LEASE MAY BE MADE AND NO OFFER TO PURCHASE OR LEASE MAY BE ACCEPTED WITHOUT THE SIGNATURE OF THE FINAL ARCHITECTURE/DESIGNER. WE HOPE YOU ENJOY THE LOOK OF ORCHIDHOUSE.



“Make  
everything  
as simple  
as possible...”

ALBERT EINSTEIN

# Introducing Orchidhouse.

## A PLACE TO LIVE

Everything where you need it to be. Powerful and elegant design. Open and engaging spaces.

The Lofts at Orchidhouse ring in a new era for living. A comfortable and unique home that's right in the heart of where you want to be. Waiting for you to create.



## A PLACE TO PLAY

Here, you live above the crowds. Yet, when in the mood, the heart of the town is right outside your front door.

Whether you favor the aroma from the neighborhood bakery or partake in a late night, last minute dinner at the bistro next door, Orchidhouse is about interaction and interplay.

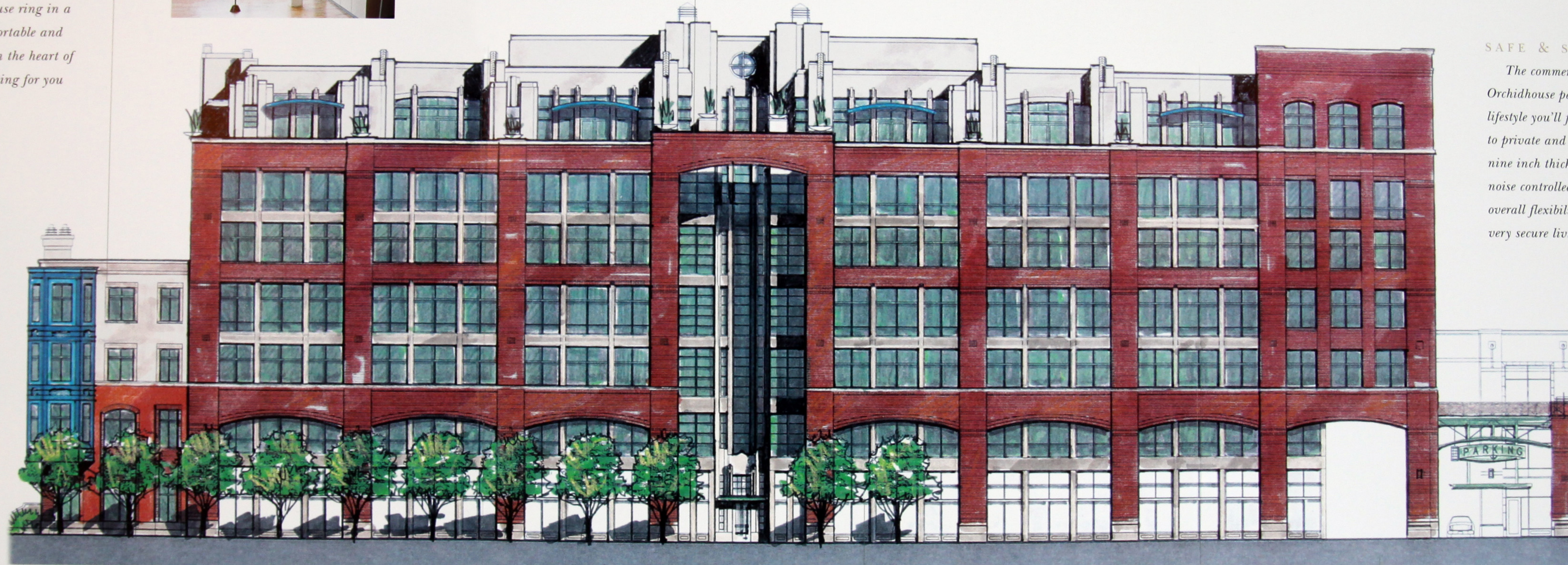


## CONNECTED TO THE WORLD

From the ground up you will live and work across a connection that goes well beyond locale. Wired to the hilt — for technologically advanced communications, comfort and convenience.

## SAFE & SECURE

The commercial construction details designed into Orchidhouse pay added tribute to the extremely smart lifestyle you'll find. From steel framed, brick exterior walls, to private and secured underground parking. And from nine inch thick concrete floors on every level, to special noise controlled interior walls, Orchidhouse delivers an overall flexibility of design in a very safe, very solid, very secure living environment — built to last.



# Loft living. Simply elegant.



Brochure courtesy of:



URBAN REALTY & DEVELOPMENT

## A PLACE TO WORK

By design, Orchidhouse was created as a comfortable place from which people — busy people — could conduct business.

Whether it be from a three-level loft of elegant living space, or an enclave of sophisticated executive suites. The beauty, quite simply, is the flexibility and seamlessness which holds the Lofts at Orchidhouse together. A home, and life, unlike any other.

Makes good sense, doesn't it? A living space that is 'Built for Life.' But amidst a sprawling sea of red tile roofs is it any wonder why our living spaces seem, at times, rather disconnected? So much so that we spend hours of our lives driving to work, and then back home again.

At MCW Holdings we think inside and outside of the box. We think about people's lives. At home. At work. And at play. And how it could all interact better if we simply planned it that way. Orchidhouse may not change the world. A small corner of it, however, is a nice beginning.

ORCHIDHOUSE — BUILT FOR LIFE